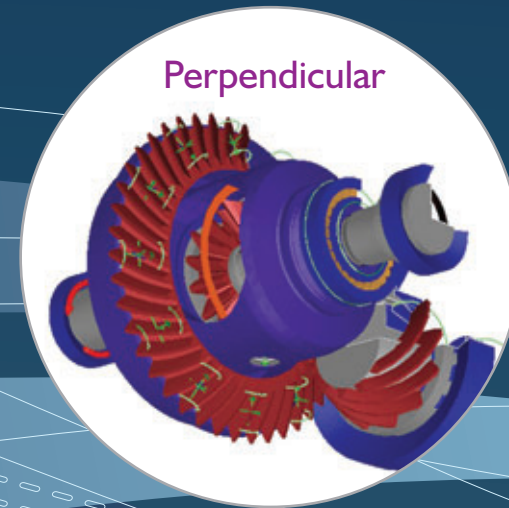
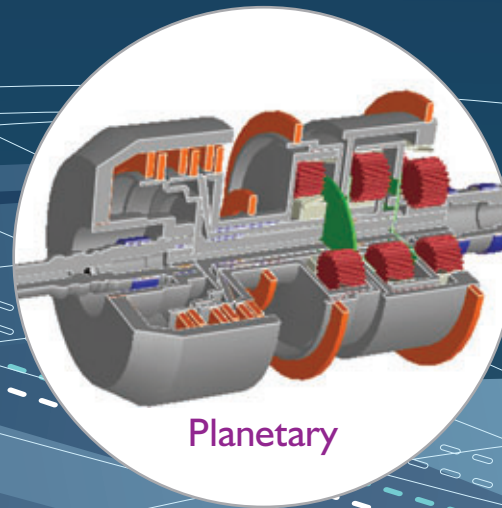
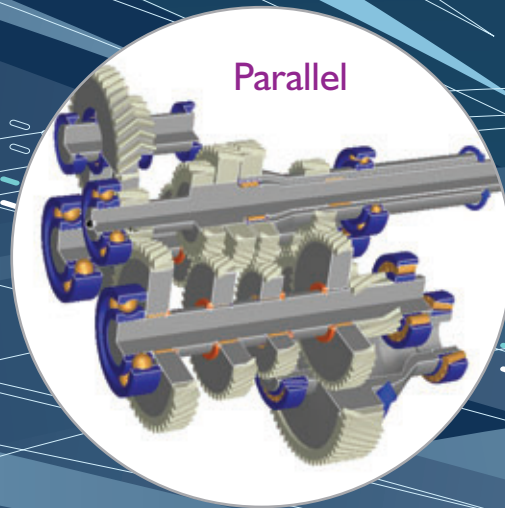
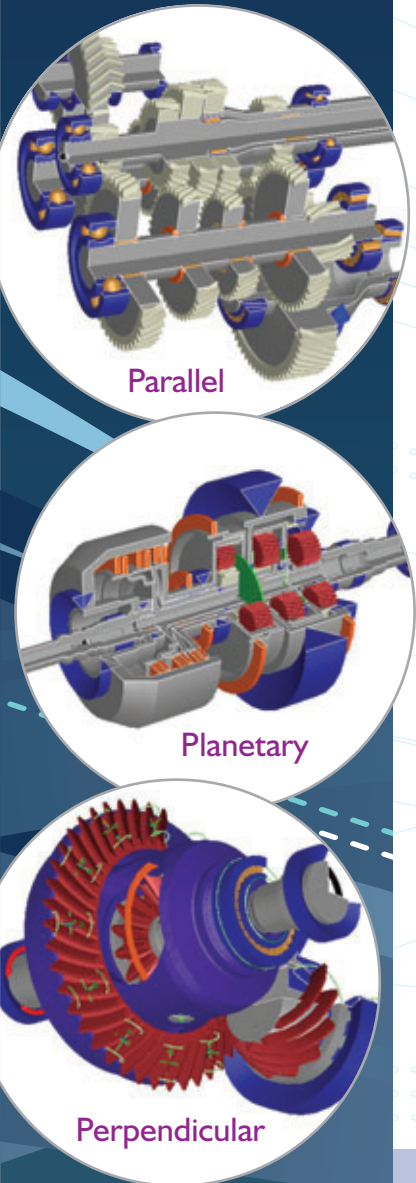


# RomaxDesigner

## Parallel Shaft, Planetary and Perpendicular Modelling



## Parallel Shaft, Planetary and Perpendicular Modelling



### Module Groups



Gears

### Durability

- Helical Gear Design and Rating
- Helical Gear Micro-Geometry Analysis
- Straight Bevel Gear Design and Rating
- Spiral Bevel Gear Design and Rating
- Hypoid Gear Design and Rating

### NVH

- Helical Gear Multi-Tooth Micro-Geometry
- Single Mesh Transmission Error
- Planetary Transmission Error

### Optimisation

- Helical Gear Macro-Geometry Optimisation
- Helical Gear Micro-Geometry Optimisation
- Helical Gear Robust Optimisation Extension
- Romax Design of Experiments (DoE)

### Interfaces

- LDP Interface
- ANSol Hypoid Gear Contact Analysis

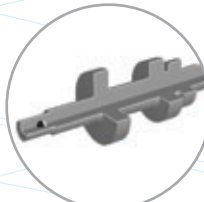


Bearings

- Advanced Radial Ball Bearing
- Advanced Cylindrical Ball Bearing
- Advanced Taper Roller Bearing
- Advanced Full Complement Needle Roller Bearing
- Advanced Four-Point Contact Bearing
- Advanced Thrust Needle Roller Bearing
- DIN ISO Supplement 4

- Romax Bearing Design of Experiments

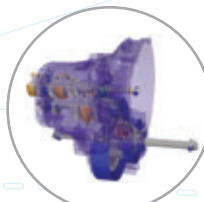
- Shared Bearing Catalogue Management



Shafts

- Shaft Fatigue
- ANSI Spline Design and Rating
- Synchroniser and Clutch Sizing
- Synchroniser Simulation

- Shaft Section Optimisation



GearboxAp

- Hydrostatic Unit CVT Module

- Gearbox Transmission Error
- RomaxNVH – Gear Whine
- RomaxNVH – Component Mode Synthesis
- Gear Rattle Analysis

- Romax Design of Experiments (DoE)

- Housing Influence
- Structural Flexibility
- Bearing Load Export to FE
- XML interface
- CAD export
- SIMPACK Model Export